

# 8810 E. COUNTY ROAD 95

± 8,750 SF AVAILABLE ~ 3.5 ACRES

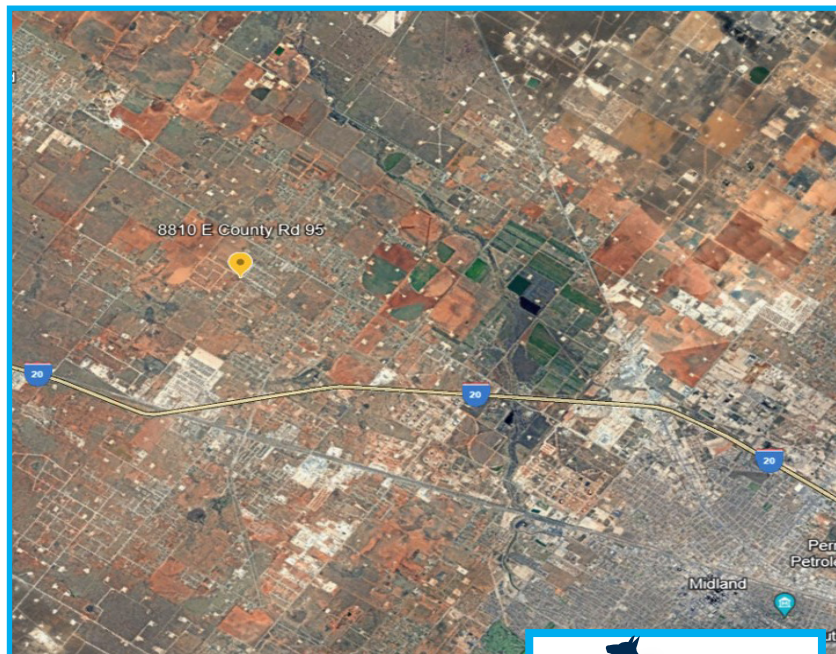
**FULL 5%  
COMMISSION  
TO PROCURING**

**WANNA GET AWAY?  
\$2000 TRAVEL VOUCHER**  
QUALIFIED TENANT ~ MINIMUM 3 YEAR LEASE



## Property Statistics

- 8,750 SF Available
- 1,875 SF Office/4,375 SF Shop/  
1,250 SF Wash Bay/1,250 Mezzanine
- 5 Offices/Reception Area/Conference  
Room/Kitchen/Office Restroom/Shop  
Restroom/Breakroom
- HVAC - Offices
- 6 - 16' x 16' Overhead Doors
- Grade Level Access
- 3.5 Acre Fenced Yard
- \$14,583.33 NNN Per Month



For More Information Contact:

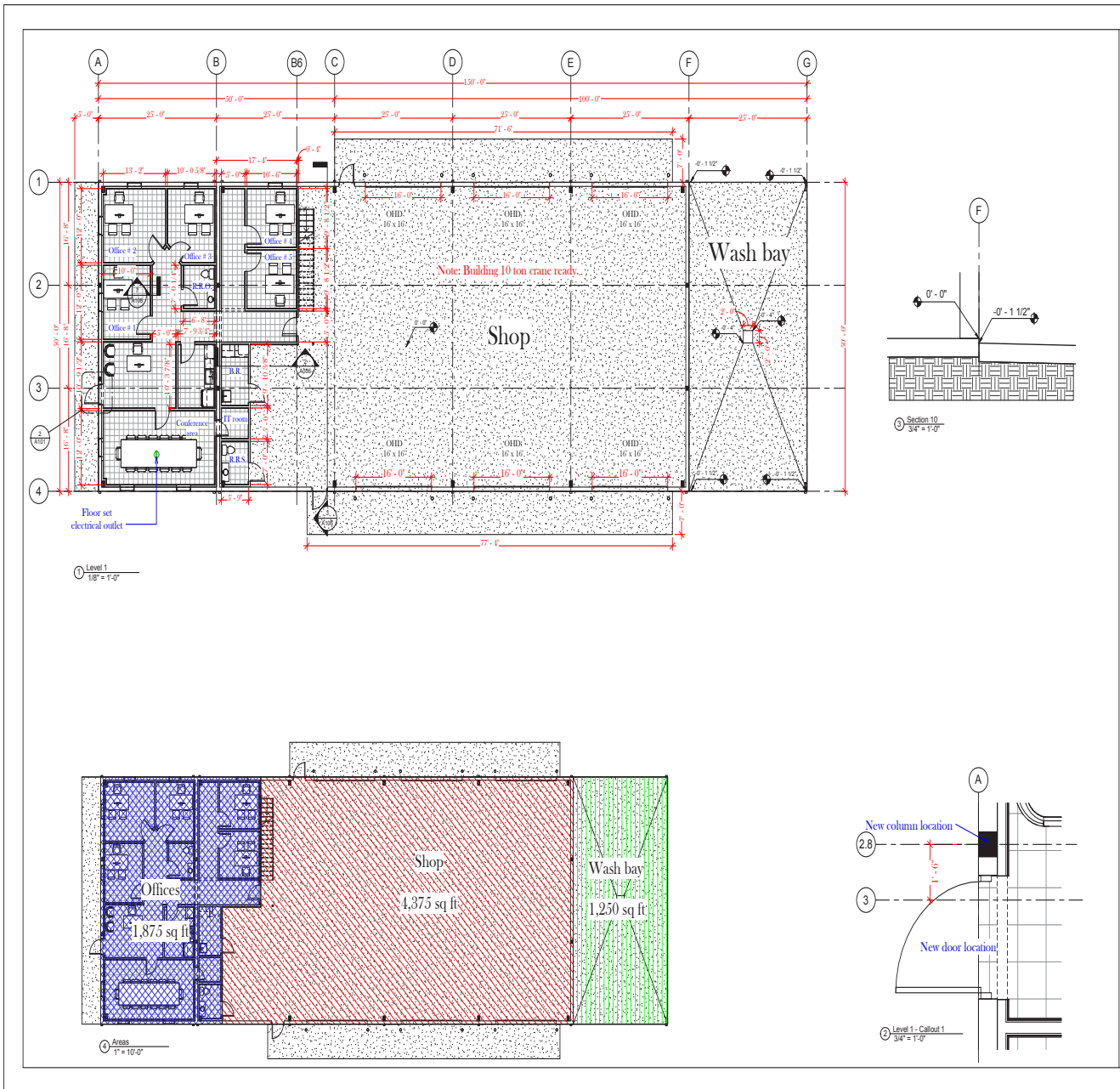
**ARTIE VALDEZ** TEL: 432-466-5368 / EMAIL: [artie@harrisonprops.com](mailto:artie@harrisonprops.com)

**KATIE HARRISON** TEL: 720-352-8549 / EMAIL: [katie@harrisonprops.com](mailto:katie@harrisonprops.com)



# 8810 E County Road 95

± 8,750 SF AVAILABLE ~ 3.5 ACRES



For More Information Contact:

**ARTIE VALDEZ** TEL: 432-466-5368 EMAIL: [artie@harrisonprops.com](mailto:artie@harrisonprops.com)

**KATIE HARRISON** TEL: 720-352-8549 EMAIL: [katie@harrisonprops.com](mailto:katie@harrisonprops.com)

